

# MAC Drop-in Solution for KHS<sup>®</sup> & Krones<sup>®</sup> filling Machines

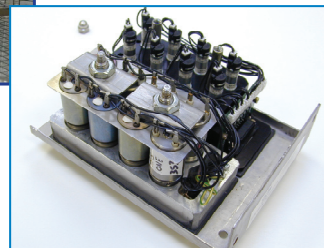


## Application Description

- Drop-in solution to replace the OEM supplied valves on KHS<sup>®</sup> & Krones<sup>®</sup> filling machines. This custom 8 station bar manifold solution bolts up to the existing mounting screws.



Previous solution



## Challenges

- Regular replacement of OEM supplied valves.
- Time consuming OEM valve replacement due to the complex mounting of the valves and the high leakage rate.
- Inconsistent response times of the valve.

## MAC Solutions

- BV314A-Cx1-00-BxxA-CTA Mod. XMP2 - SIR E265



## Customer Benefits

- Reliable alternative to OEM supplied valves that have been a source of much downtime.
- Ability to replace valve individually if failure occurs without manifold disassembly.
- Less downtime and reduced cost per failure.
- Less spare parts in inventory.
- Increased reliability.
- Increased filling accuracy due to the consistent response times of the valves (see chart).

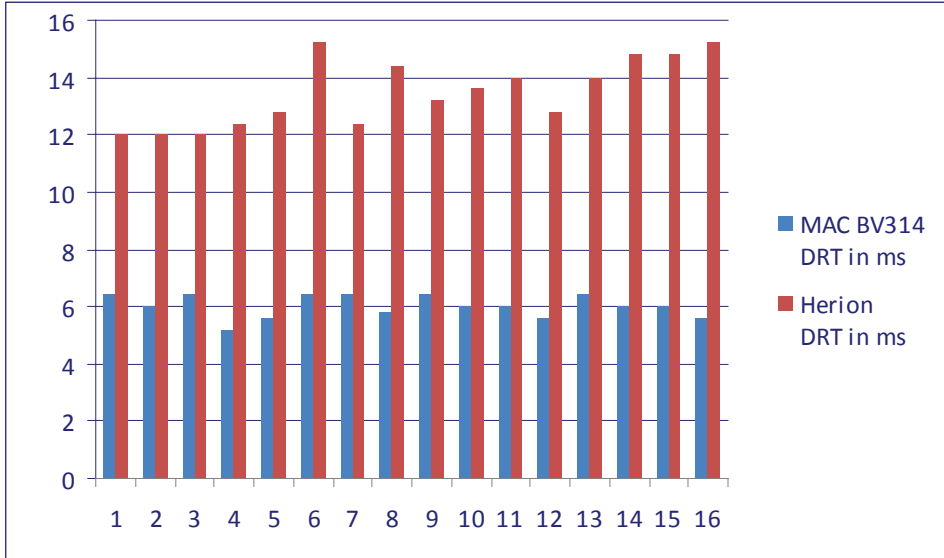
## Cost Savings

- Savings realized in increased production, reduced labour cost and fewer replacement parts.
- Savings realized by reducing overfilling.
- MDN Associates worldwide are skilled to support you in estimating cost savings you can achieve with this upgrade.

# MAC Drop-in Solution for KHS® & Kronen® filling Machines



## Response times



Valve number	MAC BV314 DRT in ms	Herion DRT in ms
1	6,4	12,0
2	6,0	12,0
3	6,4	12,0
4	5,2	12,4
5	5,6	12,8
6	6,4	15,2
7	6,4	12,4
8	5,8	14,4
9	6,4	13,2
10	6,0	13,6
11	6,0	14,0
12	5,6	12,8
13	6,4	14,0
14	6,0	14,8
15	6,0	14,8
16	5,6	15,2
Difference between fastest and slowest valve	1,2 ms	3,2 ms

To find your local distributor, visit [www.macvalves.com](http://www.macvalves.com)

